

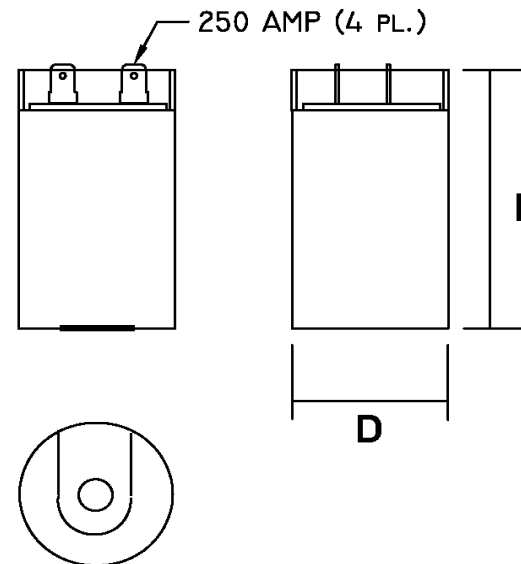
Part Number	<b>CD60B-1AJ233280-T1</b>		Revision
Customer P/N	<b>603111</b>		Revision
Capacitance	<b>233</b>	to	<b>280</b> uF.
Voltage	<b>110</b>		VAC
Dielectric	<b>Aluminum Electrolytic Motor Start</b>		
Terminal Type	<b>Dual .250" X .03" Quick Connect Terminals</b>		
Operating Temperature	<b>-40</b>	to	<b>65</b> °C.
Dissipation Factor	<b>0.1</b>		max. @ 60 Hz.

# MOTOR Capacitors, Inc.


**Motor Capacitors, Inc.**  
 335 Beinoris Drive  
 Wood Dale, Illinois 60191  
 773-774-6666 (Phone) | 773-774-6690 (Fax)  
[www.capacitorindustries.com](http://www.capacitorindustries.com)  
[info@capacitorindustries.com](mailto:info@capacitorindustries.com)

	Dimension	Tolerance
Diameter (D)	1.44	0.02
Height (L)	2.75	0.02
Quick-Connect Terminal	double	F

*Dimensions in inches*



Stamping  
**Fuxin Jiekeda Electronic Co. LTD**  
**CD60B-1AJ233280-T1**  
**233-280 uF. 110 VAC 603111**  
**Motor Starting Capacitor**  
**-40 - +65 C. 50/60 Hz.**  
**RU cRU (datecode) RoHS**  
**EIA 463 Type 2 - Standard Duty**



**EIA 463 Type 2 - Standard Duty**

Approval: J.D. Aldana  
 Date **January 7, 2014**